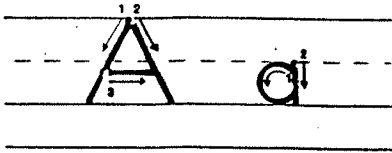


Riggs Handbook

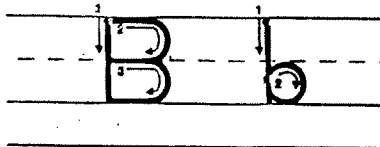
Academy Elementary



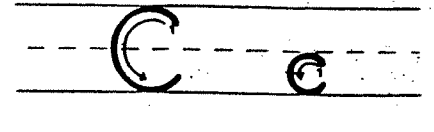
Ball and Stick Handwriting Models



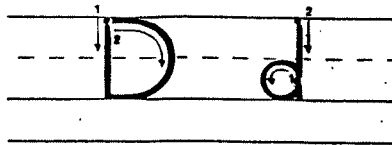
- A** Starting point, slanting down left
Starting point, slanting down right
Starting point, across the middle:
capital A
- a** Starting point, around left all the way
Starting point, straight down, touching the circle: small a



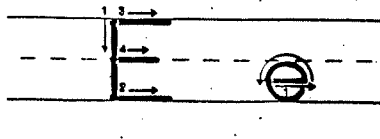
- B** Starting point, straight down
Starting point, around right and in at the middle, around right and in at the bottom: capital B
- b** Starting point, straight down, back up, around right all the way: small b



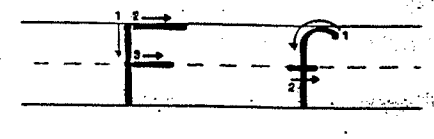
- C** Starting point, around left to stopping place: capital C
- c** Starting point, around left to stopping place: small c



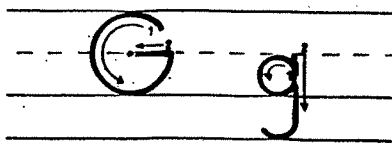
- D** Starting point, straight down
Starting point, around right and in at the bottom: capital D
- d** Starting point, around left all the way
Starting point, straight down, touching the circle: small d



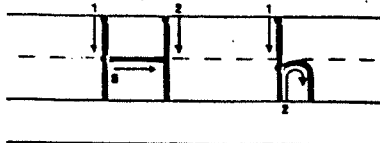
- E** Starting point, straight down
Starting point, straight out
Starting point, straight out
Starting point, straight out: capital E
- e** Starting point, straight out up and around to the left, curving down and around to the right: small e



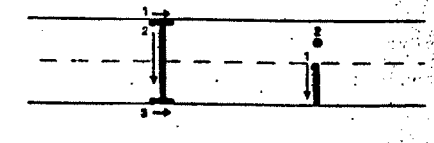
- F** Starting point, straight down
Starting point, straight out
Starting point, straight out: capital F
- f** Starting point, around left and straight down
Starting point, straight across: small f



- G** Starting point, around left, curving up and around
Straight in: capital G
- g** Starting point, around left all the way
Starting point, straight down, touching the circle, around left to stopping place: small g

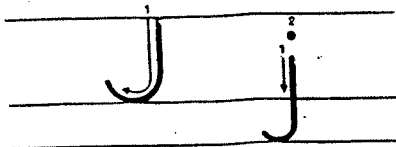


- H** Starting point, straight down
Starting point, straight down
Starting point, across the middle: capital H
- h** Starting point, straight down, back up, around right, and straight down: small h



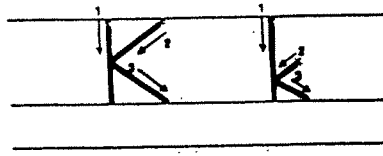
- I** Starting point, across
Starting point, straight down
Starting point, across: capital I
- i** Starting point, straight down
Dot exactly above: small i

Ball and Stick Handwriting Models



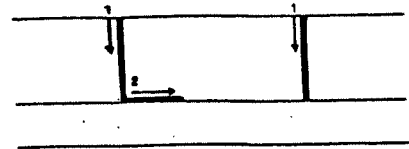
J Starting point, straight down, around left to stopping place: capital J

j Starting point, straight down, around left to stopping place: small j



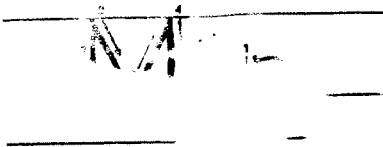
K Starting point, straight down. Starting point, slanting down left touching the line, slanting down right: capital K

k Starting point, straight down. Starting point, slanting down left, touching the line, slanting down right: small k



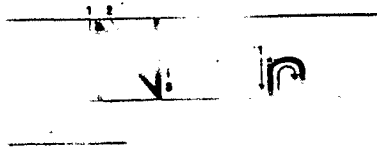
L Starting point, straight down, straight out: capital L

l Starting point, straight down: small l



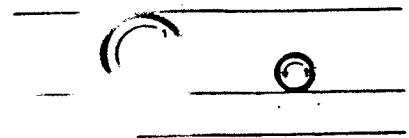
M Starting point, straight down. Starting point, slanting down right to the point, slanting down left to the point, straight back up: capital M

m Starting point, straight down. Starting point, arc back up, down: small m



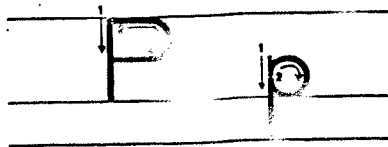
N Starting point, straight down. Starting point, slanting down right, straight back up: capital N

n Starting point, straight down. Starting point, arc back up, down: small n



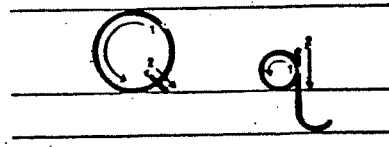
O Starting point, around left all the way: capital O

o Starting point, around left all the way: small o



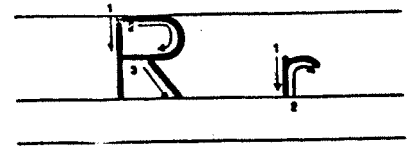
P Starting point, straight down. Starting point, around right and in at the middle: capital P

p Starting point, straight down. Starting point, around right all the way, touching the line: small p



Q Starting point, around left all the way. Starting point, slanting down right: capital Q

q Starting point, around left all the way. Starting point, straight down, touching the circle, curving up right to stopping place: small q



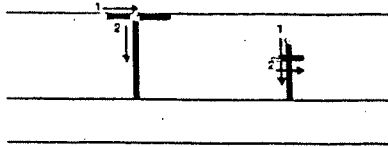
R Starting point, straight down. Starting point, around right and in at the middle, touching the line, slanting down right: capital R

r Starting point, straight down, back up, curving around right to stopping place: small r

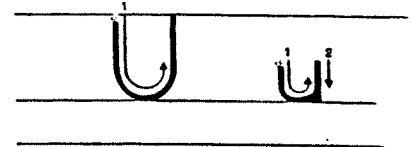
Ball and Stick Handwriting Models



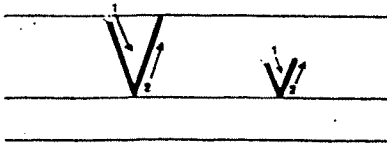
- S** Starting point, around left, curving right and down around right, curving left and up: capital S
- s** Starting point, around left, curving right and down around right, curving left and up to stopping place: small s



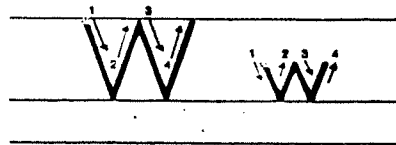
- T** Starting point, straight across
Starting point, straight down:
capital T
- t** Starting point, straight down
Starting point, across short:
small t



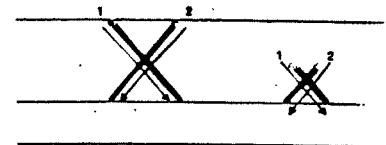
- U** Starting point, straight down,
curving around right and up,
straight up: capital U
- u** Starting point, straight down,
curving around right and up,
straight up, straight back down:
small u



- V** Starting point, slanting down right,
slanting up right: capital V
- v** Starting point, slanting down right,
slanting up right: small v

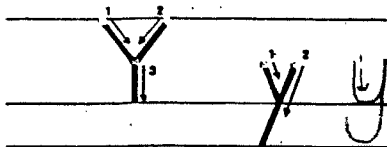


- W** Starting point, slanting down right,
slanting up right, slanting down
right, slanting up right: capital W
- w** Starting point, slanting down right,
slanting up right, slanting down
right, slanting up right: small w

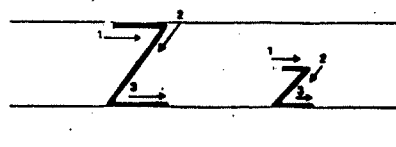


- X** Starting point, slanting down right
Starting point, slanting down left:
capital X
- x** Starting point, slanting down right
Starting point, slanting down left:
small x

* We teach
the second example!



- Y** Starting point, slanting down right,
stop
Starting point, slanting down left,
stop
Starting point, straight down:
capital Y
- y** Starting point, slanting down right
Starting point, slanting down left,
connecting the lines: small y

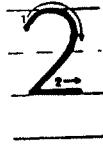


- Z** Starting point, straight across,
slanting down left, straight across:
capital Z
- z** Starting point, straight across,
slanting down left, straight across:
small z

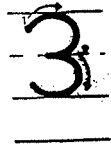
Numbers



- 1 Starting point, straight down: 1



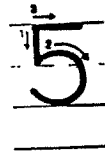
- 2 Starting point, around right, slanting left and straight across right: 2



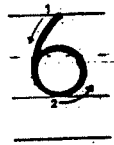
- 3 Starting point, around right, in at the middle, around right: 3



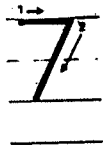
- 4 Starting point, straight down
Straight across right
Starting point, straight down,
crossing line: 4



- 5 Starting point, curving around right
and up
Starting point, straight across
right: 5



- 6 Starting point, slanting left,
around the bottom curving up
around right and into the curve: 6



- 7 Starting point, straight across
right, slanting down left: 7



- 8 Starting point, curving left, curving
down and around right, slanting
up right to starting point: 8



- 9 Starting point, curving around left
all the way, straight down: 9



- 10 Starting point, straight down
Starting point, curving left all the
way around to starting point: 10

Handwriting Assessment

Name: _____

Did the student meet the specified checkpoints?

- _____ All the time (A)
- _____ Most of the time (B)
- _____ Sometimes (C)
- _____ Rarely (D)
- _____ Assignment was not turned in (F)

Your child needs to work on the following:

- _____ Small letters touch the middle dotted line and the bottom baseline without going above or below the lines.
- _____ Capital letters touch, but do not go above the top baseline.
- _____ Letters in words are spaced comfortably close together without touching.
- _____ Words have a space between them.
- _____ Letters are formed correctly as per handwriting models in the Riggs Handbook.

Phonograms Sound Guide

6
a at - tape - want - talk
ă ā ah aw

c cat - cent
k s

d did
d

f fast
f

g good - gentle
g j

o odd- over-do-cost
ah ō ōō aw

s sit - as
s z

qu quit
kw

b big
b

e end - even
ě ē

h head
h

7

i it - silent - radio
 i i e

j just
 j

k kind
 k

l let
 l

m met
 m

n nice
 n

p pet
 p

r round
 r

t tent
 t

u up - music - true - put
 u u oo oo

v vase - love
 v

3
w wet
 w

x box
 ks

y yippee - myth - by - baby
 y i i e

z zero
 z

er her
 er - the er of her

ur nurse
 er - the ur of nurse

ir first
 er - the ir of first

wor works
 er - the or of works

ear early
 er - the ear of early

sh shut - push
 nation - friendship
 sh

used at the beginning of a word, at the end of a syllable, but not at the beginning of any syllable after the first one, except for the ending 'ship'.

ee feet
e - double ee
always says e

th thin – this
th th

ay may
ā - 2-letter ay
that we do use at the end of English words

ai fail
ā - 2-letter ai
that we do NOT use at the end of English words

ow cow – low
ow ō

ou out – four – you – touch
ow ō ōō ũ

aw saw
aw - aw that we do use at the end of English words

au sauce
au - au that we do NOT use at the end of English words

ew grew – few
ōō ū
that we do use at the end of English words

10
eu neutral - feud
oo u

oy toy
oy - oy
that we do use at the end of English words

oi noise
oi - oi
that we do NOT use at the end of English words

oo room - look - door
oo oo o

ch check - echo - chef
ch k sh

ng ring
ng

ea eat - head - break
e e a

ar card
ar

ck pack
k - 2-letter k
used only after a single vowel which says, ă ĕ ĭ ō ŭ

ed graded - loved - mixed
ed d t
past tense ending

or

for
or

wh

when
hw

ui

fruit - guide - build
 \overline{oo} \overline{i} \overline{i}

that we do NOT use at the end of English words

oa



boat
 \overline{o} - the \overline{o} of boat

ey

they - valley
 \overline{a} \overline{e}

that we do use at the end of English words

ei

veil - ceiling
 \overline{a} \overline{e}

that we do NOT use at the end of English words

eigh

weigh
 \overline{a} - 4-letter \overline{a}

igh

high
 \overline{i} - 3-letter \overline{i}

ie

field - lie
 \overline{e} \overline{i}

kn

know
n - 2-letter n
used only at the beginning of a base word

- 12
- gn gnaw - reign
 n - 2-letter n
 used both at the beginning and end of a base word
- wr write
 r - 2-letter r
- ph phonogram
 f - 2-letter f
- dge badge
 j - 3-letter j
 used only after a single vowel which says, a e i o u
- oe
Ⓢ toe
 ō- the ō of toe
- tch catch
 ch - 3-letter ch
 used after a single vowel which says, a e i o u
- ti nation
 sh - tall - letter sh
 used at the beginning of any syllable after the first one
- si session - vision
 sh zh
 used at the beginning of any syllable after the first one
- ci special
 sh - short - letter sh
 used at the beginning of any syllable after the first one

ough

though - through - rough - cough - thought - bough
o oo uf off aw ow

THE PHONEMES AND GRAPHEMES OF CORRECT ENGLISH SPELLING

Phonemes	'æ'	'ɑ'	'ah'	'aw'	'b'	'k'	's'	'd'
Graphemes	a t	cape pay pail eight they break vell	want odd	cost all paw pause thought	bear	cat school back kite mosquito	cent sat	dog loved
Phonemes	'e'	'ɛ'	ʔ	'g'	'j'	'h'	ʔ'	ʔ
Graphemes	bed bread	be conceit meat feet key lady radio prairie	far phone	gate ghost	jug badge charge	hot	hit myth build	find pie sigh my guide guy
Phonemes	'l'	'm'	'n'	'o'	'ōō'	'p'	'kw'*	'r'
Graphemes	leg	man	not know gnat pneumonia	no floor row four though boat toe	food do dew due fruit through you neutral	pan	quiet	rose wrap rhythm
Phonemes	't'	'ü'	'ū'	'oo'	ʔ	'w'	'ks'*	'y'
Graphemes	tab fixed	fuss country	music few feud	put foot	vase	wet	box	yard
Phonemes	'z'	'er'	'ar'	'or'	'sh'	'ch'	'th'	'th'
Graphemes	zoo as xylophone	mothers hurry first word learning	car	order	shut chic nation session special ocean	change batch	thin	this
Phonemes	'ng'*	'ow'	'oy'	'zh'	'hw'			
Graphemes	ring	cow bounty bough	boy coin	vision equation	when			

Elementary sounds are phonemes which cannot be further divided; this method uses 42 sounds (those shown with an * can be further divided) to simultaneously teach 118 commonly used correct spelling patterns. They are taught, with multi-sensory, *explicit* and direct instruction (no worksheets) in the first nine weeks of this method, Grades 1 and up. Beyond these common graphemes, which render most fourth grade oral vocabularies *encodable* (correct spelling) and *decodable* (able to read and comprehend regular text), there are other unusual spelling patterns in such words as *psalm, waltz, beauty, view, lieu, azure, onion, forfeit, friend, capture, question, sure, ocean, guest, shoe, etc.* For more on the importance of teaching correct graphemes, ask for our collection of research on this timely subject.